

## AX'Lin Classic UHF

The AX'Lin Classic UHF is designed for laundry applications. It enables to blindly identify clothing and linen volumes.

### Key features



200 cycles



60 bars



Sewing

### Applications

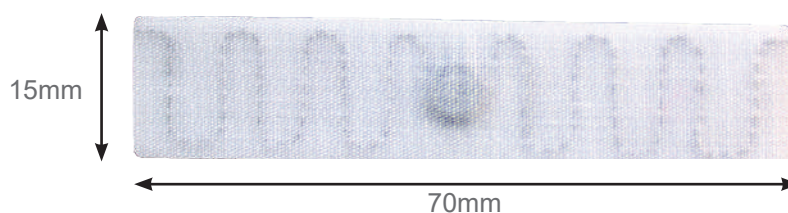
Management of industrial washing of PPE, workwear, personal clothing, flat linen, carpets, etc.

## Options

Personalization	Without marking	S/N, Datamatrix and logo printing
Reference	AX'Lin Classic UHF	AX'Lin Classic UHF with marking

## Physical specifications

Dimensions	70( L) x 15( W) x 1(H) mm
Material	Textile
Color	White
Installation Method	Sewing



V4.1

Non-contractual datasheet

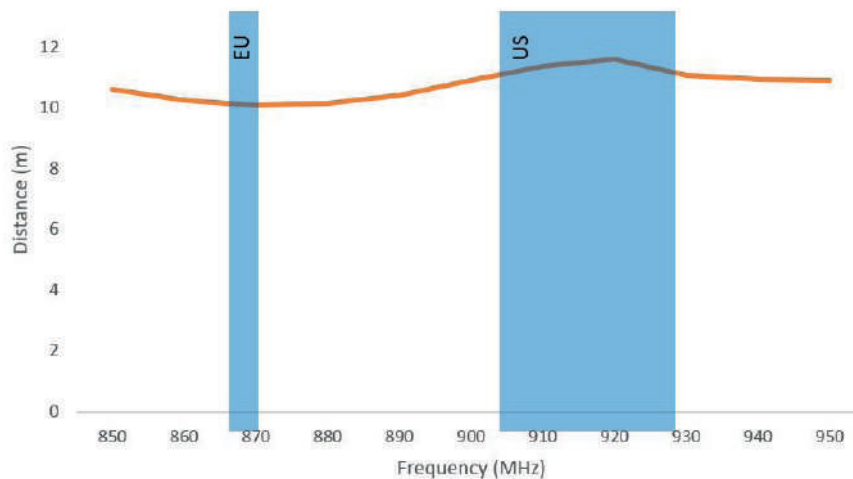
## Functional specifications

Type	UHF
Frequency	Global: 860 to 960MHz
Air interface protocol	EPC Class1 Gen2; ISO18000-6C
IC Type	Ucode 8
Memory	EPC: 128 bits
Data retention	20 years
Functionalities	Read/write
Read range	Up to 10 meters (ERP=2W)

## Environmental and industry compliance

Certificates	RoHS, REACH
Storage Temperature	-40°C~ +85°C
Operating cycle	1) Washing: 90°C(194oF), 15 minutes, 200 cycles 2) Pre-drying in Tumbler: 180°C(320oF), 30minutes 3) Ironer: 180°C(356oF), 10 seconds, 200 cycles 4) Sterilization Process: 135°C(275oF), 20 minutes
Mechanical Resistance	Up to 60 bars
Chemicals	Normal common chemicals in the washing processes

## Measured reading range



## Related products

Options	Resistance to Gamma rays	Heat sealing
Reference	AX'Lin Gamma UHF	AX'Lin Thermo UHF

